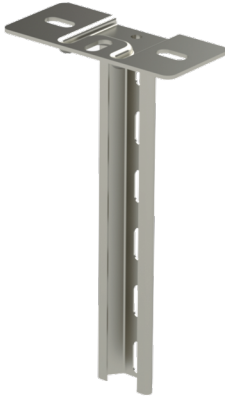


Ceiling support TP1-250 HDG

Ceiling supports TP1 are used to install cable ladders, cable trays and wire mesh trays to ceiling or floor with HK13-type intermediate supports and TPK-type gate supports.



Product name	TP1-250 HDG		
SKU	1449601		
Material	Steel		
Corrosivity category	C1-C4		
Color	Grey		
Sales unit	PCE		
Packing size	10 PCE		
Dimensions (mm) Width Height Length	150	273	70
Weight (kg/pce)	0,52		
GTIN	6438377022198		
Surface finish	Hot-dip galvanized after manufacturing in accordance with standard EN ISO 1461		

Dimension A (mm)	264
Loading capacity (kg)	350

