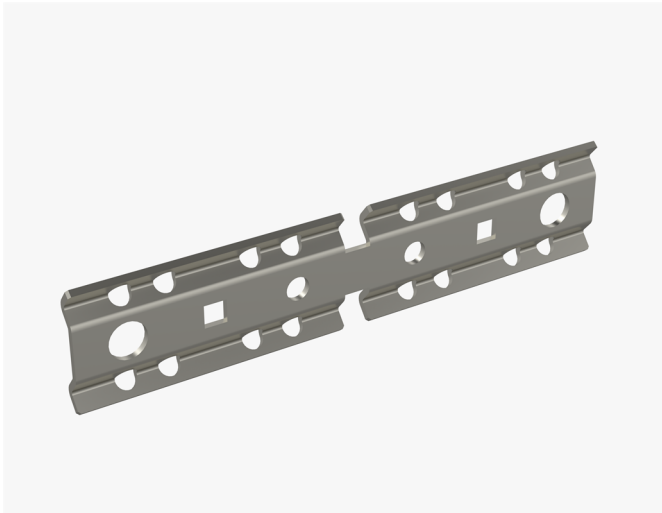


Connection plate WMT UC1D EG

Connection plates WMT UC1D and connection plates WMT CL1 are used to make T- and X-junctions between wire mesh trays WMT.



Product name	WMT UC1D EG		
SKU	1448714		
Material	Steel		
Corrosivity category	C1-C2		
Color	Grey		
Sales unit	BG		
Packing size	10 PCE / 1 BG		
Dimensions (mm) Width Height Length	6	38	168
Weight (kg/pce)	0,083		
GTIN	6438377019334		
Surface finish	Electroplated with zinc after manufacturing in accordance with standard EN ISO 2081		

