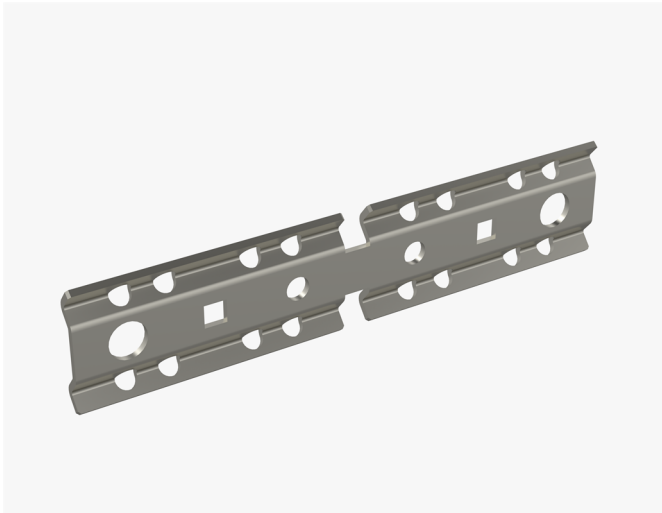


Connection plate WMT UC1D HDG

Connection plates WMT UC1D and connection plates WMT CL1 are used to make T-junctions between wire mesh trays WMT.



Product name	WMT UC1D HDG		
SKU	1448705		
Material	Steel		
Corrosivity category	C1-C4		
Color	Grey		
Sales unit	BG		
Packing size	10 PCE / 1 BG		
Dimensions (mm) Width Height Length	6	38	168
Weight (kg/pce)	0,084		
GTIN	6438377019242		
Surface finish	HDG or corresponding corrosion protection		

