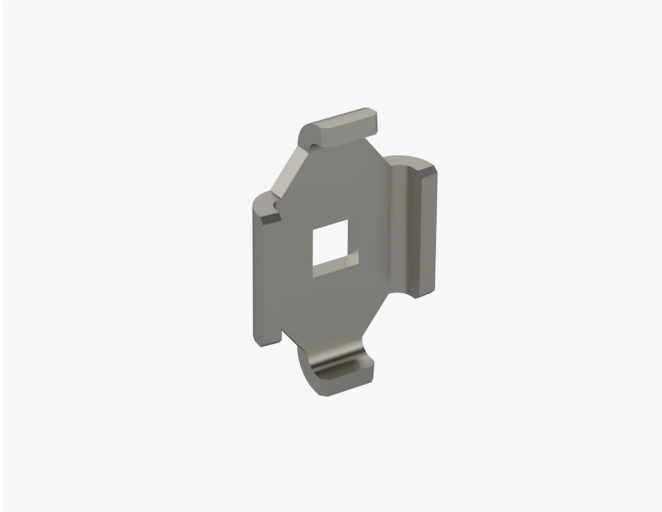


# Connector plate

## WMT CL1 EG

Connector plates WMT CL1 are used to mount wire mesh trays WMT-50, WMT-100 and WMT-150 on a wall. Recommended to use only with 70-100 mm wide wire mesh trays. Can be used horizontally and vertically.



Product name	WMT CL1 EG		
SKU	1448712		
Material	Steel		
Corrosivity category	C1-C2		
Color	Grey		
Sales unit	BG		
Packing size	20 PCE / 1 BG		
Dimensions (mm) Width   Height   Length	6	25	38
Weight (kg/pce)	0,013		
GTIN	6438377019310		
Surface finish	Electroplated with zinc after manufacturing in accordance with standard EN ISO 2081		

