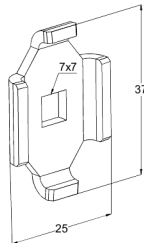
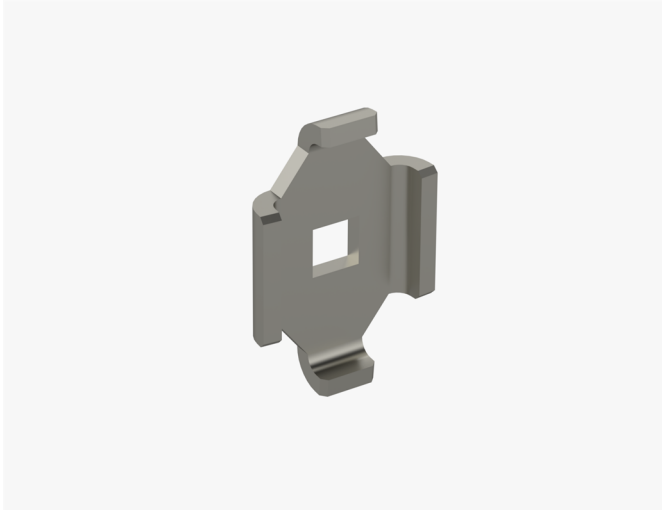


## Connector plate WMT CL1 HST

Connector plates WMT CL1 are used to mount wire mesh trays WMT-50, WMT-100 and WMT-150 on a wall. Recommended to use only with 70-100mm wide wire mesh trays. Can be used horizontally and vertically.



Product name	WMT CL1 HST		
SKU	1448700		
Material	Acid-proof steel		
Corrosivity category	C1-CX		
Color	Grey		
Sales unit	BG		
Packing size	20 PCE / 1 BG		
Dimensions (mm) Width   Height   Length	6	25	38
Weight (kg/pce)	0,013		
GTIN	6438377019198		
Surface finish	Manufactured of stainless steel in accordance with standard EN 10088		