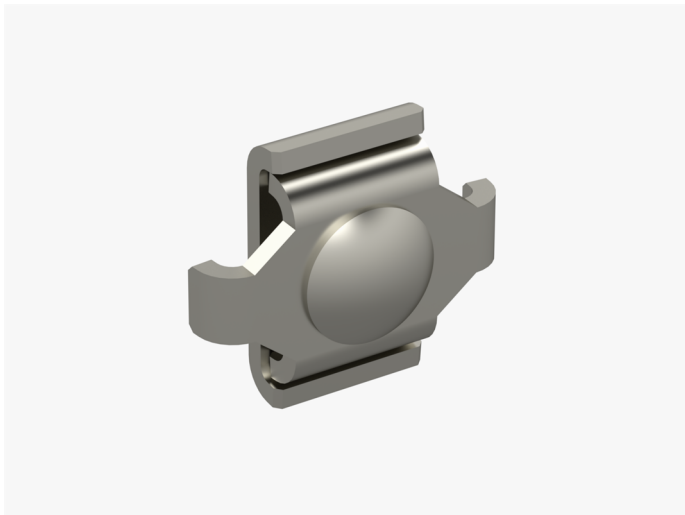


Connector set WMT CL EG

Connector sets WMT CL are used to extend wire mesh trays WMT-30, WMT-50, WMT-100, WMT-150 and attach bends' inner edge.



Product name	WMT CL EG		
SKU	1448710		
Material	Steel		
Corrosivity category	C1-C2		
Color	Grey		
Sales unit	BG		
Packing size	20 PCE / 1 BG		
Dimensions (mm) Width Height Length	20	32	38
Weight (kg/pce)	0,032		
GTIN	6438377019297		
Surface finish	Electroplated with zinc after manufacturing in accordance with standard EN ISO 2081		

