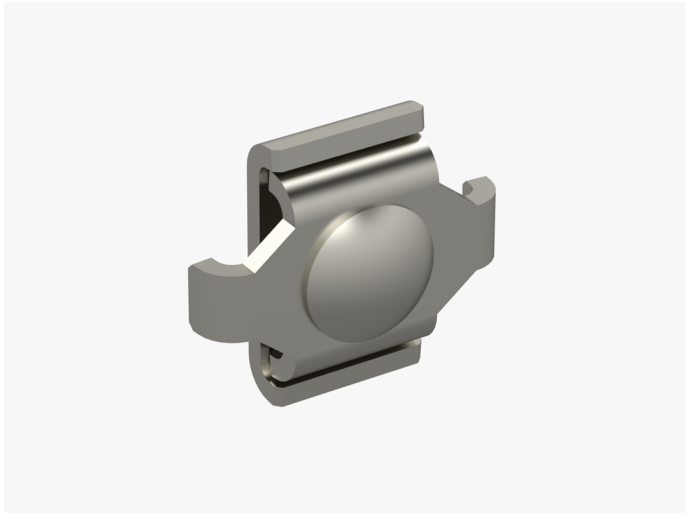


Connector set WMT CL HST

Connector sets WMT CL are used to extend wire mesh trays WMT-30, WMT-50, WMT-100, WMT-150 and attach bends' inner edge.



Product name	WMT CL HST		
SKU	1448706		
Material	Acid-proof steel		
Corrosivity category	C1-CX		
Color	Grey		
Sales unit	BG		
Packing size	20 PCE / 1 BG		
Dimensions (mm) Width Height Length	20	32	38
Weight (kg/pce)	0,032		
GTIN	6438377019259		
Surface finish	Manufactured of stainless steel in accordance with standard EN 10088		

