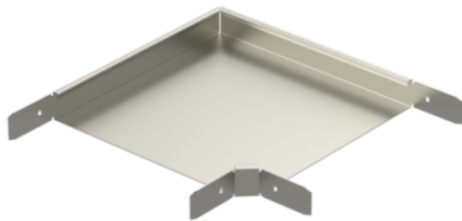


## Corner piece RS90-60-500 XPG

Corner pieces RS90 are used to make a 90° angles for KR-type cable trays. Jointing of RS90 corners to cable trays is fast and easy, because corners have joint slats already at place. Product set includes bolts and nuts for fastening.



Product name	RS90-60-500 XPG		
SKU	1478004		
Material	Steel		
Corrosivity category	C1-C4		
Color	Grey		
Sales unit	PCE		
Packing size	2 PCE		
Dimensions (mm) Width   Height   Length	500	60	500
Weight (kg/pce)	3,52		
GTIN	6438377128746		
Surface finish	Manufactured of coated steel in accordance with standard EN 10346		