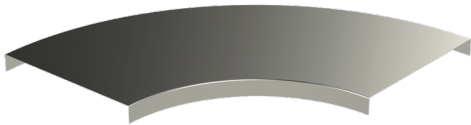


Cover

KRL-KS90-500 R=100 PG

Covers KRL-KS90 protect cables from damage, dirt and UV radiation as well as finishes the installation for KS90 bends. KRL-KS90 covers' inside radius options are R=100 mm, R=300 mm, R=600 mm and R=1000 mm.



Product name	KRL-KS90-500 R=100 PG		
SKU	1432820		
Material	Steel		
Corrosivity category	C1-C2		
Color	Grey		
Sales unit	PCE		
Packing size	10 PCE		
Dimensions (mm) Width Height Length	605	35	605
Weight (kg/pce)	2,52		
GTIN	6438377016920		
Surface finish	Manufactured of hot-dip galvanized steel in accordance with standard EN 10346		

Dimension A (mm)	505
Radius (mm)	100

