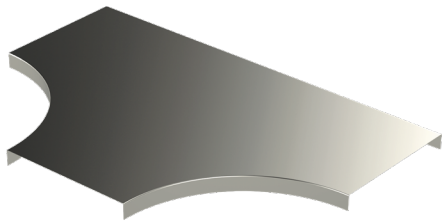


## Cover

### KRL-KST-300 R=600 XPG

Covers KRL-KST protect cables from damage, dirt and UV radiation as well as finishes the installation for KST pieces. KRL-KST covers' inside radius options are R=100 mm, R=300 mm, R=600 mm and R=1000 mm.



Product name	KRL-KST-300 R=600 XPG		
SKU	1433364		
Material	Steel		
Corrosivity category	C1-C4		
Color	Grey		
Sales unit	PCE		
Packing size	10 PCE		
Dimensions (mm) Width   Height   Length	890	35	1470
Weight (kg/pce)	6,97		
GTIN	6438377108564		
Surface finish	Manufactured of coated steel in accordance with standard EN 10346		

Dimension A (mm)	305
Radius (mm)	600

