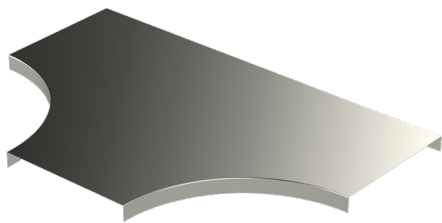


Cover

KRL-KST-600 R=1000 PG

Covers KRL-KST protect cables from damage, dirt and UV radiation as well as finishes the installation for KST pieces. KRL-KST covers' inside radius options are R=100 mm, R=300 mm, R=600 mm and R=1000 mm.



Product name	KRL-KST-600 R=1000 PG		
SKU	1432836		
Material	Steel		
Corrosivity category	C1-C2		
Color	Grey		
Sales unit	PCE		
Packing size	10 PCE		
Dimensions (mm) Width Height Length	1575	35	2540
Weight (kg/pce)	21,16		
GTIN	6438377017088		
Surface finish	Manufactured of hot-dip galvanized steel in accordance with standard EN 10346		

Dimension A (mm)	605
Radius (mm)	1000

