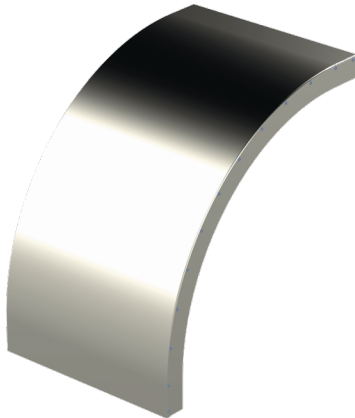


## Cover

### KRL-KSV-200 R=300 XPG

Vertical bend covers KRL-KSV protect cables from damage, dirt and UV radiation as well as finishes the installation for KSV bends. KRL-KSV covers' inside radius is R=300 mm.



|  |   |     |     |
|--|---|-----|-----|
| Product name                               | KRL-KSV-200 R=300 XPG   |     |     |
| SKU  | 1433389   |     |     |
| Material                                   | Steel   |     |     |
| Corrosivity category                       | C1-C4   |     |     |
| Color                                      | Grey  |     |     |
| Sales unit                                 | PCE   |     |     |
| Packing size                               | 4 PCE   |     |     |
| Dimensions (mm)<br>Width   Height   Length | 208   | 411 | 411 |
| Weight (kg/pce)                            | 1,25  |     |     |
| GTIN                                       | 6438377108816   |     |     |
| Surface finish                             | Manufactured of coated steel in accordance with standard EN 10346 |     |     |

|                  |     |
|------------------|-----|
| Dimension A (mm) | 202 |
| Radius (mm)      | 300 |

