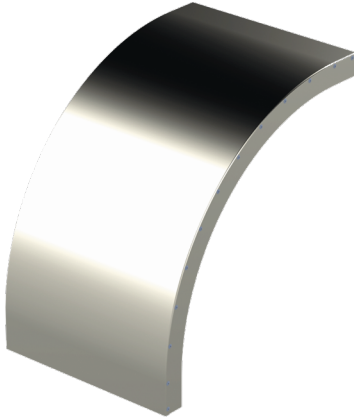


Cover

KRL-KSV-400 R=300 XPG

Vertical bend covers KRL-KSV protect cables from damage, dirt and UV radiation as well as finishes the installation for KSV bends. KRL-KSV covers' inside radius is R=300 mm.



Product name	KRL-KSV-400 R=300 XPG		
SKU	1433391		
Material	Steel		
Corrosivity category	C1-C4		
Color	Grey		
Sales unit	PCE		
Packing size	4 PCE		
Dimensions (mm) Width Height Length	408	411	411
Weight (kg/pce)	2,12		
GTIN	6438377108830		
Surface finish	Manufactured of coated steel in accordance with standard EN 10346		

Dimension A (mm)	402
Radius (mm)	300

