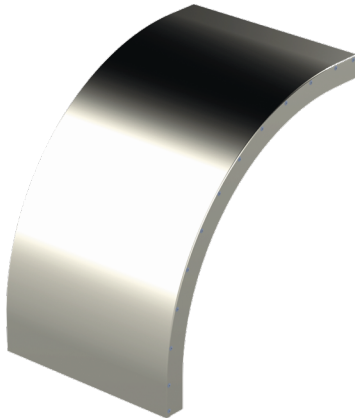


Cover

KRL-KSV-500 R=300 PG

Vertical bend covers KRL-KSV protect cables from damage, dirt and UV radiation as well as finishes the installation for KSV bends. KRL-KSV covers' inside radius is R=300 mm.



Product name	KRL-KSV-500 R=300 PG		
SKU	1432845		
Material	Steel		
Corrosivity category	C1-C2		
Color	Grey		
Sales unit	PCE		
Packing size	4 PCE		
Dimensions (mm) Width Height Length	508	411	411
Weight (kg/pce)	2,56		
GTIN	6438377017170		
Surface finish	Manufactured of hot-dip galvanized steel in accordance with standard EN 10346		

Dimension A (mm)	502
Radius (mm)	300

