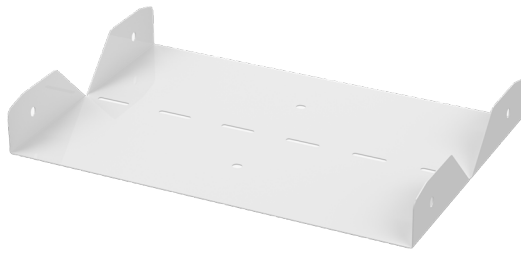


Elbow joint

RVS-40-200 M

Elbow joints RVS are used to make 0–90° vertical angles for cable trays KRA and KRB.



| | | | |
|--|--|----|-----|
| Product name | RVS-40-200 M | | |
| SKU | 1431462 | | |
| Material | Steel | | |
| Corrosivity category | C1-C2 | | |
| Color | White | | |
| Sales unit | PCE | | |
| Packing size | 10 PCE | | |
| Dimensions (mm) Width Height Length | 197 | 38 | 200 |
| Weight (kg/pce) | 0,29 | | |
| GTIN | 6438377010652 | | |
| Surface finish | White RAL 9010 polyester paint coating | | |

| | |
|------------------|-----|
| Dimension A (mm) | 197 |
| Dimension H (mm) | 38 |

