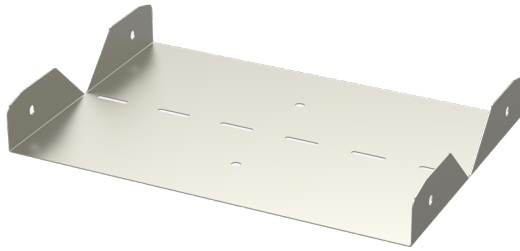


Elbow joint

RVS-40-200 PG

Elbow joints RVS are used to make 0–90° vertical angles for cable trays KRA and KRB.



Product name	RVS-40-200 PG		
SKU	1431452		
Material	Steel		
Corrosivity category	C1-C2		
Color	Grey		
Sales unit	PCE		
Packing size	10 PCE		
Dimensions (mm) Width Height Length	197	38	200
Weight (kg/pce)	0,29		
GTIN	6438377010591		
Surface finish	Manufactured of hot-dip galvanized steel in accordance with standard EN 10346		

Dimension A (mm)	197
Dimension H (mm)	38

