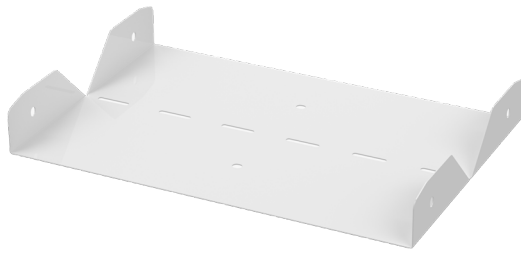


Elbow joint

RVS-40-600 M

Elbow joints RVS are used to make 0–90° vertical angles for cable trays KRA and KRB.



Product name	RVS-40-600 M		
SKU	1431466		
Material	Steel		
Corrosivity category	C1-C2		
Color	White		
Sales unit	PCE		
Packing size	10 PCE		
Dimensions (mm) Width Height Length	597	38	200
Weight (kg/pce)	0,75		
GTIN	6438377010690		
Surface finish	White RAL 9010 polyester paint coating		

Dimension A (mm)	597
Dimension H (mm)	38

