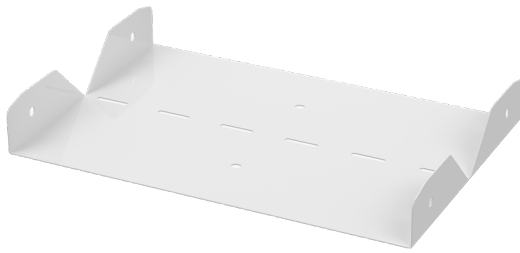


# Elbow joint

## RVS-60-100 M

Elbow joints RVS are used to make 0–90° vertical angles for cable trays KRA and KRB.



Product name	RVS-60-100 M		
SKU	1432531		
Material	Steel		
Corrosivity category	C1-C2		
Color	White		
Sales unit	PCE		
Packing size	10 PCE		
Dimensions (mm) Width   Height   Length	98	58	240
Weight (kg/pce)	0,25		
GTIN	6438377015350		
Surface finish	White RAL 9010 polyester paint coating		

Dimension A (mm)	97
Dimension H (mm)	58

