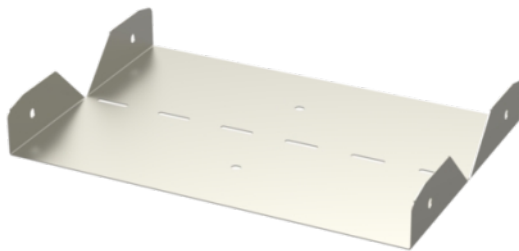


Elbow joint RVS-60-600 XPG

Elbow joints RVS are used to make 0–90° vertical angles for KR-type cable trays. RVS joints cover cable trays' ends totally and protect cables from damages. Product set includes bolts and nuts for fastening.



Product name	RVS-60-600 XPG		
SKU	1478029		
Material	Steel		
Corrosivity category	C1-C4		
Color	Grey		
Sales unit	PCE		
Packing size	10 PCE		
Dimensions (mm) Width Height Length	600	60	240
Weight (kg/pce)	0,93		
GTIN	6438377129231		
Surface finish	Manufactured of coated steel in accordance with standard EN 10346		