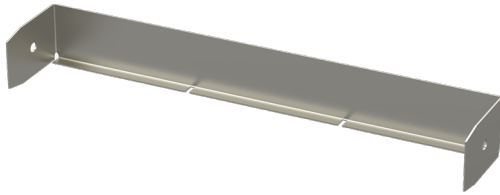


End plate

P-110-300 KRA PG

End plates P are used to finish the installation and cover ends of KRA and KRB cable trays.



Product name	P-110-300 KRA PG		
SKU	1432713		
Material	Steel		
Corrosivity category	C1-C2		
Color	Grey		
Sales unit	PCE		
Packing size	10 PCE		
Dimensions (mm) Width Height Length	295	105	57
Weight (kg/pce)	0,36		
GTIN	6438377016401		
Surface finish	Manufactured of hot-dip galvanized steel in accordance with standard EN 10346		

Dimension A (mm)	297
Dimension H (mm)	105

