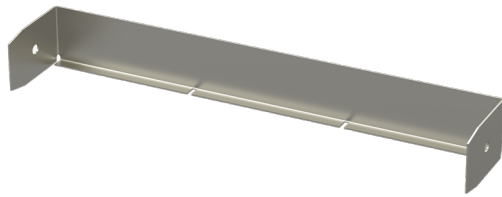


## End plate P-40-300 KRA PG

End plates P are used to finish the installation and cover ends of KRA and KRB cable trays.



|  |   |    |    |
|--|---|----|----|
| Product name                               | P-40-300 KRA PG   |    |    |
| SKU  | 1431773   |    |    |
| Material                                   | Steel   |    |    |
| Corrosivity category                       | C1-C2   |    |    |
| Color                                      | Grey  |    |    |
| Sales unit                                 | PCE   |    |    |
| Packing size                               | 10 PCE  |    |    |
| Dimensions (mm)<br>Width   Height   Length | 295   | 37 | 56 |
| Weight (kg/pce)                            | 0,14  |    |    |
| GTIN                                       | 6438377011826   |    |    |
| Surface finish                             | Manufactured of hot-dip galvanized steel in accordance with standard EN 10346 |    |    |

|                  |     |
|------------------|-----|
| Dimension A (mm) | 297 |
| Dimension H (mm) | 37  |

