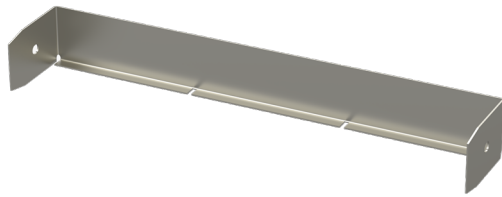


End plate P-90-200 KRA PG

End plates P are used to finish the installation and cover ends of KRA and KRB cable trays.



| | | | |
|--|---|----|----|
| Product name | P-90-200 KRA PG | | |
| SKU | 1432692 | | |
| Material | Steel | | |
| Corrosivity category | C1-C2 | | |
| Color | Grey | | |
| Sales unit | PCE | | |
| Packing size | 10 PCE | | |
| Dimensions (mm) Width Height Length | 195 | 85 | 57 |
| Weight (kg/pce) | 0,16 | | |
| GTIN | 6438377016272 | | |
| Surface finish | Manufactured of hot-dip galvanized steel in accordance with standard EN 10346 | | |

| | |
|------------------|-----|
| Dimension A (mm) | 197 |
| Dimension H (mm) | 85 |

