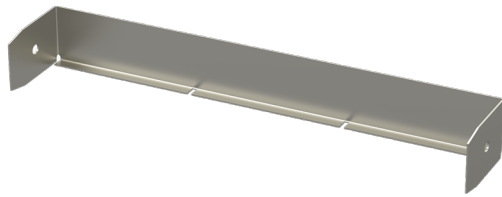


End plate P-90-600 KRA PG

End plates P are used to finish the installation and cover ends of KRA and KRB cable trays.



Product name	P-90-600 KRA PG		
SKU	1432696		
Material	Steel		
Corrosivity category	C1-C2		
Color	Grey		
Sales unit	PCE		
Packing size	10 PCE		
Dimensions (mm) Width Height Length	595	85	57
Weight (kg/pce)	0,62		
GTIN	6438377016319		
Surface finish	Manufactured of hot-dip galvanized steel in accordance with standard EN 10346		

Dimension A (mm)	597
Dimension H (mm)	85

