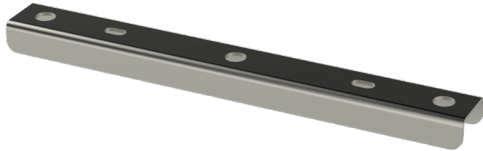


Gate support PRT-200 PG

Universal gate supports PRT are used as gate or intermediate supports for cable ladders, cable trays and wire mesh trays. Can be mounted to the ceiling with one or two threaded rods GT, depending on loading division and width of cable ladders or -trays.



| | | | |
|--|---|----|----|
| Product name | PRT-200 PG | | |
| SKU | 1449970 | | |
| Material | Steel | | |
| Corrosivity category | C1-C2 | | |
| Color | Grey | | |
| Sales unit | PCE | | |
| Packing size | 20 PCE | | |
| Dimensions (mm) Width Height Length | 250 | 17 | 30 |
| Weight (kg/pce) | 0,21 | | |
| GTIN | 6438377023454 | | |
| Surface finish | Manufactured of hot-dip galvanized steel in accordance with standard EN 10346 | | |

| | |
|------------------|-----|
| Dimension A (mm) | 250 |
|------------------|-----|

