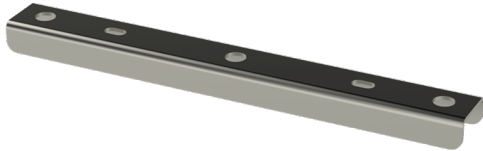


Gate support PRT-300 XPG

Universal gate supports PRT are used as gate or intermediate supports for cable ladders, cable trays and wire mesh trays. Can be mounted to the ceiling with one or two threaded rods GT, depending on loading division and width of cable ladders or -trays.



Product name	PRT-300 XPG		
SKU	1433449		
Material	Steel		
Corrosivity category	C1-C4		
Color	Grey		
Sales unit	PCE		
Packing size	20 PCE		
Dimensions (mm) Width Height Length	350	17	30
Weight (kg/pce)	0,3		
GTIN	6438377109943		
Surface finish	Manufactured of coated steel in accordance with standard EN 10346		

Dimension A (mm)	350
------------------	-----

