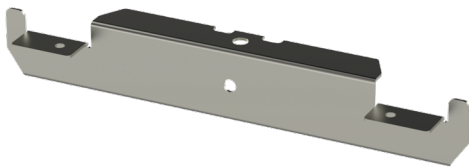


Intermediate support HK13-1016 HDG

Intermediate supports HK13 are used for supporting KS-type cable ladders into ceiling by using threaded rods GT, ceiling supports TP1, HK1, HK2 or mounting rails AS / AS K.



Product name	HK13-1016 HDG		
SKU	1449980		
Material	Steel		
Corrosivity category	C1-C4		
Color	Grey		
Sales unit	PCE		
Packing size	10 PCE		
Dimensions (mm) Width Height Length	1030	50	55
Weight (kg/pce)	2,13		
GTIN	6438377023508		
Surface finish	Hot-dip galvanized after manufacturing in accordance with standard EN ISO 1461		

Dimension A (mm)	1030
Dimension C (mm)	17

