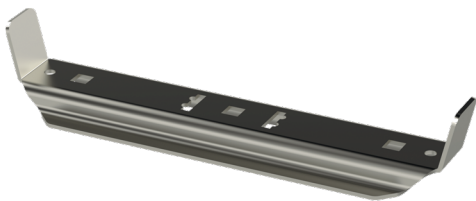


## Intermediate support MK-210 PG

Intermediate supports MK are used for supporting KS20- and KS60-type cable ladders into ceiling by using threaded rods GT (one or two) or mounting rails PS.



Product name	MK-210 PG		
SKU	1449242		
Material	Steel		
Corrosivity category	C1-C2		
Color	Grey		
Sales unit	PCE		
Packing size	10 PCE		
Dimensions (mm) Width   Height   Length	186	51	71
Weight (kg/pce)	0,28		
GTIN	6438377020019		
Surface finish	Manufactured of hot-dip galvanized steel in accordance with standard EN 10346		

Dimension A (mm)	186
Dimension B (mm)	50
Dimension C (mm)	10,5x10,5

