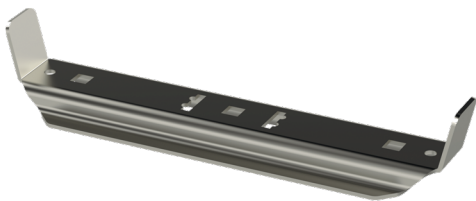


Intermediate support MK-216 PG

Intermediate supports MK are used for supporting KS20- and KS60-type cable ladders into ceiling by using threaded rods GT (one or two) or mounting rails PS.



Product name	MK-216 PG		
SKU	1449252		
Material	Steel		
Corrosivity category	C1-C2		
Color	Grey		
Sales unit	PCE		
Packing size	10 PCE		
Dimensions (mm) Width Height Length	186	51	71
Weight (kg/pce)	0,28		
GTIN	6438377020071		
Surface finish	Manufactured of hot-dip galvanized steel in accordance with standard EN 10346		

Dimension A (mm)	186
Dimension B (mm)	50
Dimension C (mm)	16,5

