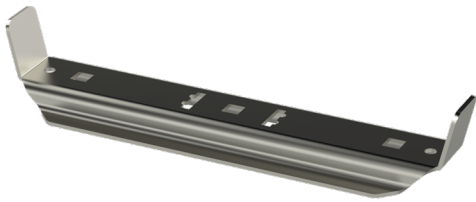


# Intermediate support MK-310 HDG

Intermediate supports MK are used for supporting KS20- and KS60-type cable ladders into ceiling by using threaded rods GT (one or two) or mounting rails PS.



Product name	MK-310 HDG		
SKU	1433123		
Material	Steel		
Corrosivity category	C1-C4		
Color	Grey		
Sales unit	PCE		
Packing size	10 PCE		
Dimensions (mm) Width   Height   Length	286	51	71
Weight (kg/pce)	0,51		
GTIN	6438377018238		
Surface finish	Hot-dip galvanized after manufacturing in accordance with standard EN ISO 1461		

Dimension A (mm)	286
Dimension B (mm)	100
Dimension C (mm)	10,5x10,5

