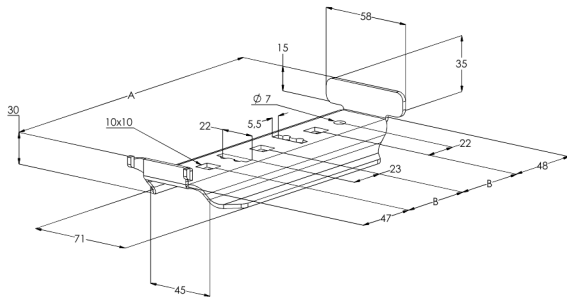
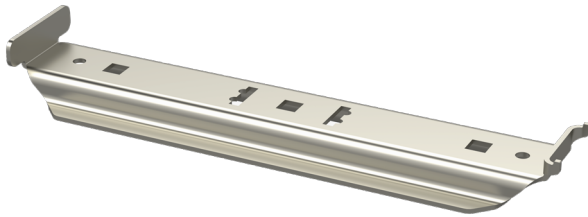


# Intermediate support RMK-40-400 10 PG

Intermediate supports RMK are used for supporting KRA and KRB cable trays into ceiling by using threaded rods GT (one or two) or mounting rails PS.



Product name	RMK-40-400 10 PG		
SKU	1431494		
Material	Steel		
Corrosivity category	C1-C2		
Color	Grey		
Sales unit	PCE		
Packing size	10 PCE		
Dimensions (mm) Width   Height   Length	395	35	71
Weight (kg/pce)	0,65		
GTIN	6438377010799		
Surface finish	Manufactured of hot-dip galvanized steel in accordance with standard EN 10346		

Dimension A (mm)	395
Dimension B (mm)	150
Dimension C (mm)	10,5x10,5
Dimension H (mm)	35
Loading capacity (kg)	200