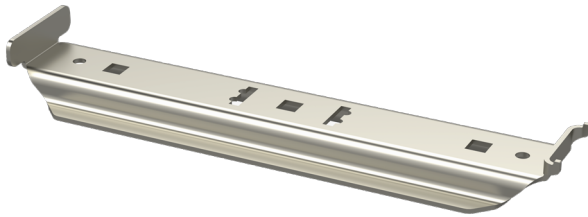


Intermediate support RMK-40-600 10 PG

Intermediate supports RMK are used for supporting KRA and KRB cable trays into ceiling by using threaded rods GT (one or two) or mounting rails PS.



Product name	RMK-40-600 10 PG		
SKU	1431496		
Material	Steel		
Corrosivity category	C1-C2		
Color	Grey		
Sales unit	PCE		
Packing size	10 PCE		
Dimensions (mm) Width Height Length	595	35	71
Weight (kg/pce)	0,99		
GTIN	6438377010812		
Surface finish	Manufactured of hot-dip galvanized steel in accordance with standard EN 10346		

Dimension A (mm)	595
Dimension B (mm)	250
Dimension C (mm)	10,5x10,5
Dimension H (mm)	35
Loading capacity (kg)	180

