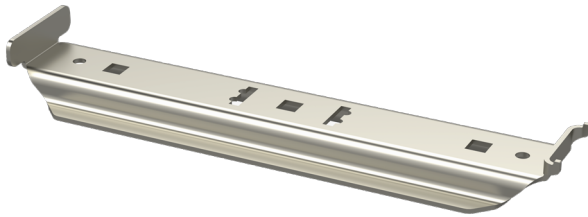


Intermediate support RMK-60-300 10 PG

Intermediate supports RMK are used for supporting KRA and KRB cable trays into ceiling by using threaded rods GT (one or two) or mounting rails PS.



Product name	RMK-60-300 10 PG		
SKU	1432613		
Material	Steel		
Corrosivity category	C1-C2		
Color	Grey		
Sales unit	PCE		
Packing size	1 PCE		
Dimensions (mm) Width Height Length	295	55	71
Weight (kg/pce)	0,49		
GTIN	6438377015824		
Surface finish	Manufactured of hot-dip galvanized steel in accordance with standard EN 10346		

Dimension A (mm)	295
Dimension B (mm)	100
Dimension C (mm)	10,5x10,5
Dimension H (mm)	55
Loading capacity (kg)	200

