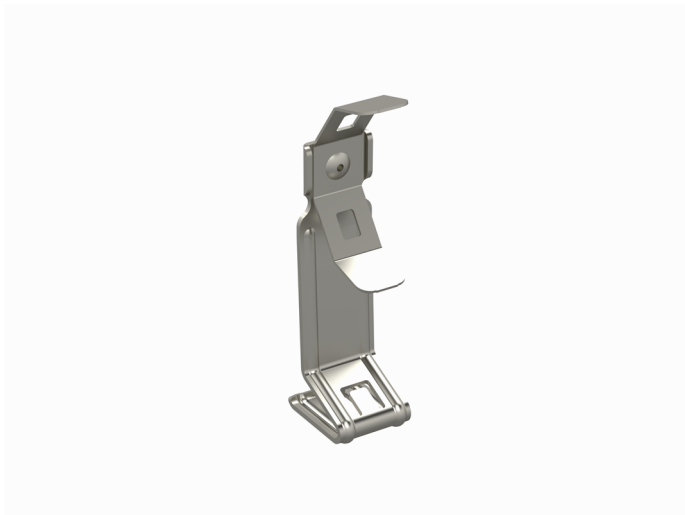


## Intermediate support WMT CSF-6 EG

Quick-adjust intermediate supports WMT CSF and threaded rods GT-6 are used for ceiling installations with wire mesh trays. Recommended to use only with 50-200 mm wide wire mesh trays.



Product name	WMT CSF-6 EG		
SKU	1448750		
Material	Steel		
Corrosivity category	C1-C2		
Color	Grey		
Sales unit	BG		
Packing size	10 PCE / 1 BG		
Dimensions (mm) Width   Height   Length	42	127	29
Weight (kg/pce)	0,08		
GTIN	6438377101329		
Surface finish	Electroplated with zinc after manufacturing in accordance with standard EN ISO 2081		

