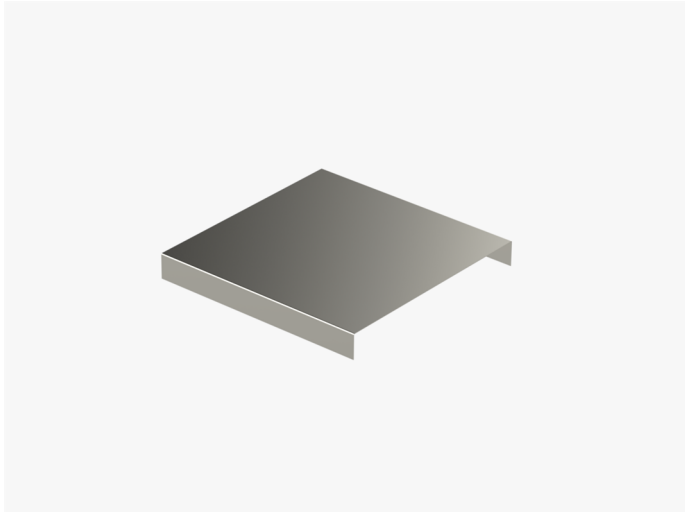


# Joint cover

## KRL-J-500 PG

Joint covers KRL-J are used to cover cable ladders' KRL-type covers at junction place gap.



Product name	KRL-J-500 PG		
SKU	1432855		
Material	Steel		
Corrosivity category	C1-C2		
Color	Grey		
Sales unit	PCE		
Packing size	10 PCE		
Dimensions (mm) Width   Height   Length	505	35	304
Weight (kg/pce)	0,99		
GTIN	6438377017279		
Surface finish	Manufactured of hot-dip galvanized steel in accordance with standard EN 10346		

Dimension A (mm)	505
Dimension B (mm)	304

