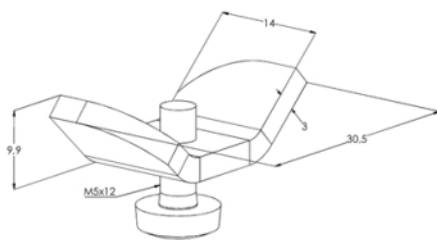


Lighting fixture

HST MEK VM

Lighting fixtures MEK VM are used for mounting luminaires and other devices to MEK-type lighting support rails. Installation: two MEK VM shall be fixed to the luminaire, then the luminaire lifted to a suitable location in the MEK lighting rail and fixed into dovetail groove with "one hand and a half turn" - fast and easy. It is also possible to move the luminaires along the lighting rail steplessly later. The safe work load of MEK VM is 40 kg.



| | | | |
|-------------------------|--|----|----|
| Product name | HST MEK VM | | |
| SKU | 1430587 | | |
| Material | Acid-proof steel | | |
| Corrosivity category | C1-CX | | |
| Color | Grey | | |
| Sales unit | PCE | | |
| Packing size | 100 PCE | | |
| Dimensions (mm) | | | |
| Width Height Length | 31 | 19 | 14 |
| Weight (kg/pce) | 0,013 | | |
| GTIN | 6438377006068 | | |
| Surface finish | Manufactured of stainless steel in accordance with standard EN 10088 | | |