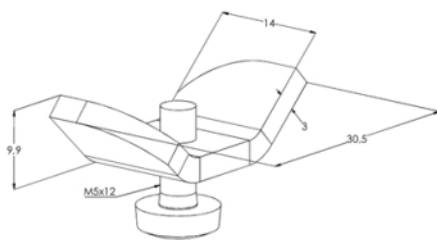


Lighting fixture MEK VM PG

Lighting fixtures MEK VM are used for mounting luminaires and other devices to MEK-type lighting support rails. Installation: two MEK VM shall be fixed to the luminaire, then the luminaire lifted to a suitable location in the MEK lighting rail and fixed into dovetail groove with "one hand and a half turn" - fast and easy. It is also possible to move the luminaires along the lighting rail steplessly later. The safe work load of MEK VM is 40 kg.



Product name	MEK VM PG		
SKU	1449355		
Material	Steel		
Corrosivity category	C1-C2		
Color	Grey		
Sales unit	PCE		
Packing size	100 PCE		
Dimensions (mm)			
Width Height Length	31	19	14
Weight (kg/pce)	0,013		
GTIN	6438377020484		
Surface finish	Manufactured of hot-dip galvanized steel in accordance with standard EN 10346		