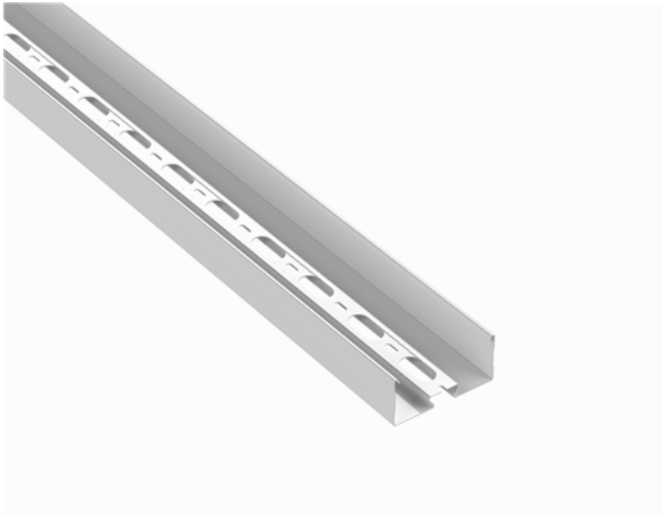


# Lighting support rail MEK 110 L=3000 M

Lighting support rails MEK 110 are used for installation of luminaires, cables and other devices in shopping centres, schools, office- and commercial building, parking halls, warehouses etc. Unique profile allows longer spans and use of MEK VM sliding nuts. MEK 110 are suitable for high loading capacities and have more space for cables.



Product name	MEK 110 L=3000 M		
SKU	1449309		
Material	Steel		
Corrosivity category	C1-C2		
Color	White		
Sales unit	MTR		
Packing size	21 PCE / 63 MTR		
Dimensions (mm) Width   Height   Length	110	51	3000
Weight (kg/pce)	5,72		
GTIN	6438377020163		
Surface finish	White RAL 9010 polyester paint coating		

Dimension L (mm)	3000
Material thickness (mm)	1

