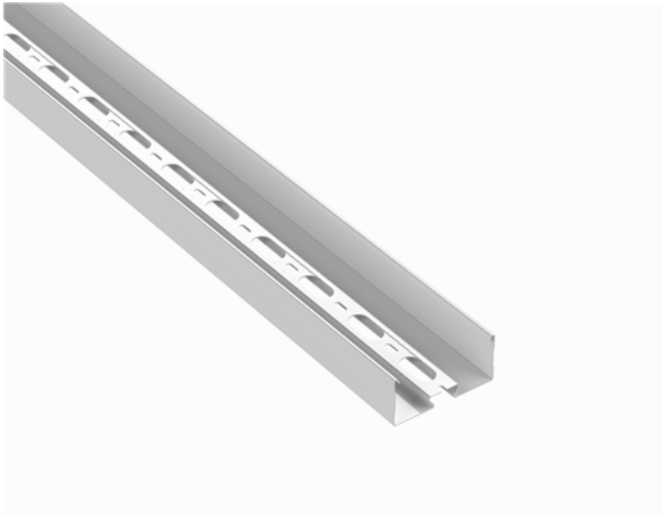


# Lighting support rail

## MEK 110 L=6000 M

Lighting support rails MEK 110 are used for installation of luminaries, cables and other devices in shopping centres, schools, office- and commercial building, parking halls, warehouses etc. Unique profile allows longer spans and use of MEK VM sliding nuts. MEK 110 are suitable for high loading capacities and have more space for cables.



Product name	MEK 110 L=6000 M		
SKU	1449317		
Material	Steel		
Corrosivity category	C1-C2		
Color	White		
Sales unit	MTR		
Packing size	21 PCE / 126 MTR		
Dimensions (mm) Width   Height   Length	110	51	6000
Weight (kg/pce)	11,44		
GTIN	6438377020217		
Surface finish	White RAL 9010 polyester paint coating		

Dimension L (mm)	6000
Material thickness (mm)	1

