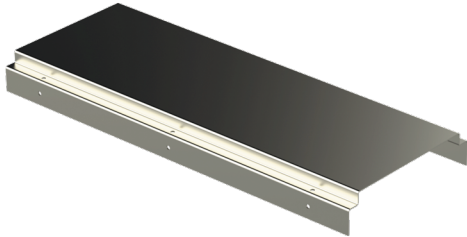


Mounting plate

KL-600 L=510 PG

Mounting plates KL are used to mount junction boxes and other devices to KS-type cable ladders as well as to protect cables from damage.



Product name	KL-600 L=510 PG		
SKU	1449206		
Material	Steel		
Corrosivity category	C1-C2		
Color	Grey		
Sales unit	PCE		
Packing size	10 PCE		
Dimensions (mm) Width Height Length	600	47	510
Weight (kg/pce)	4,04		
GTIN	6438377019860		
Surface finish	Manufactured of hot-dip galvanized steel in accordance with standard EN 10346		

Dimension L (mm)	510
Dimension A (mm)	603

