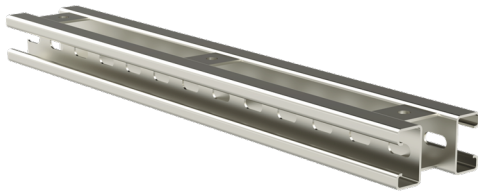


Mounting rail

ASR-L L=6030 HDG

Two-sided mounting rails ASR-L are used for fastening cable ladders and -trays to ceilings. For support, VK-type wall supports are suitable and can be mounted from one or both sides of the rails. Height adjustment is easy, especially when sliding nuts SMT, AKM or TB are used for fixing the wall supports.



Product name	ASR-L L=6030 HDG		
SKU	1449136		
Material	Steel		
Corrosivity category	C1-C4		
Color	Grey		
Sales unit	MTR		
Packing size	1 PCE / 6 MTR		
Dimensions (mm) Width Height Length	48	89	6030
Weight (kg/pce)	22,65		
GTIN	6438377019655		
Surface finish	Hot-dip galvanized after manufacturing in accordance with standard EN ISO 1461		

Dimension L (mm)	6030
------------------	------

