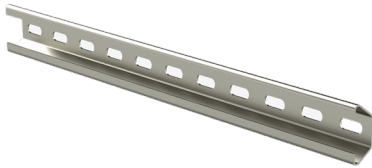


Mounting rail FP L=1980 HDG

Mounting rails FP are used to attach ceiling brackets RTF-S as well as to extend ceiling supports TP1 with joints JK.



Product name	FP L=1980 HDG		
SKU	1449620		
Material	Steel		
Corrosivity category	C1-C4		
Color	Grey		
Sales unit	PCE		
Packing size	1 PCE / 1,98 MTR		
Dimensions (mm) Width Height Length	48	20	1980
Weight (kg/pce)	1,94		
GTIN	6438377022303		
Surface finish	Hot-dip galvanized after manufacturing in accordance with standard EN ISO 1461		

Dimension L (mm)	1980
------------------	------

