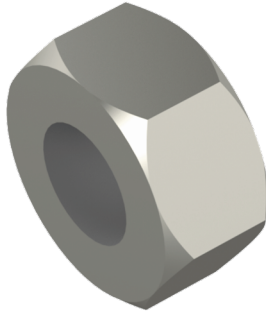


# Nut

## MU M16 EG

Nuts are used for fastening intermediate supports to threaded rods.



Product name	MU M16 EG		
SKU	1449993		
Material	Steel		
Corrosivity category	C1-C2		
Color	Grey		
Sales unit	PCE		
Packing size	50 PCE		
Dimensions (mm) Width   Height   Length	130	70	90
Weight (kg/pce)	0,02		
GTIN	6438377023560		
Surface finish	Electroplated with zinc after manufacturing in accordance with standard EN ISO 4042		