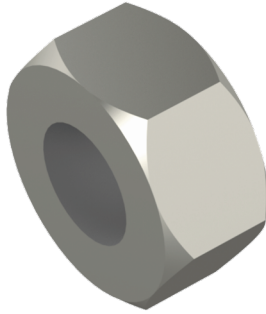


Nut

MU M16 M

Nuts are used for fastening intermediate supports to threaded rods.



Product name	MU M16 M		
SKU	1431741		
Material	Steel		
Corrosivity category	C1-C2		
Color	White		
Sales unit	PCE		
Packing size	100 PCE		
Dimensions (mm) Width Height Length	0	0	0
Weight (kg/pce)	0,02		
GTIN	6438377011734		
Surface finish	White RAL 9010 polyester paint coating		