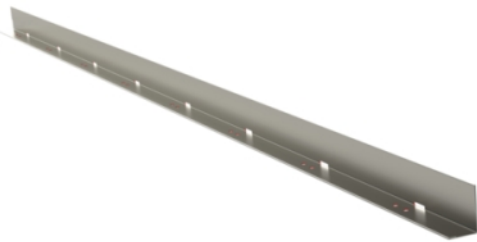


Separation plate

AP-60 L=2000 XPG

Separation plates AP are used to separate cables, especially low and high voltage cables, within cable ladders, cable trays and wire mesh trays. AP plates can be fixed by using cable ties, bolts and nuts or screws. When separation plates are used inside non-perforated cable trays KRA then support plates APT can be used for fixing.



Product name	AP-60 L=2000 XPG		
SKU	1478034		
Material	Steel		
Corrosivity category	C1-C4		
Color	Grey		
Sales unit	PCE		
Packing size	10 PCE		
Dimensions (mm) Width Height Length	40	60	2000
Weight (kg/pce)	2,06		
GTIN	6438377129309		
Surface finish	Manufactured of coated steel in accordance with standard EN 10346		