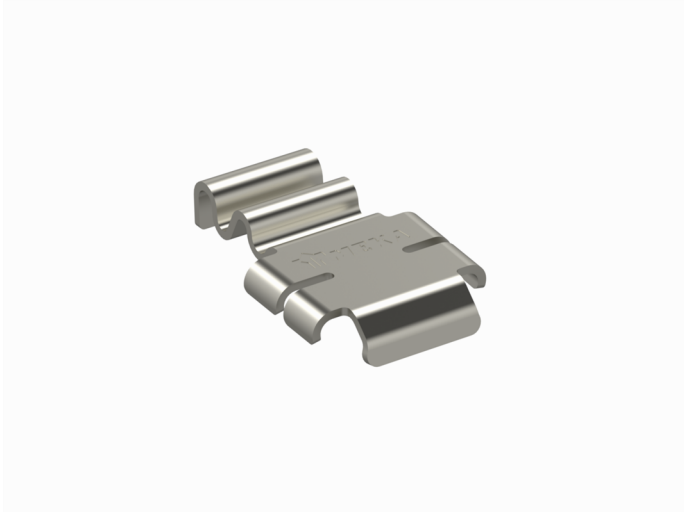


Snap in connector WMT SC1 EG

Snap in connectors WMT SC1 and WMT SC2 are used for fast extension of 70-200 mm wide wire mesh trays WMT-50, WMT-100 and WMT-150 without tools and screws. WMT SC1 is installed on the bottom of a wire mesh tray.



Product name	WMT SC1 EG		
SKU	1448723		
Material	Steel		
Corrosivity category	C1-C2		
Color	Grey		
Sales unit	BG		
Packing size	10 PCE / 1 BG		
Dimensions (mm) Width Height Length	33	10	55
Weight (kg/pce)	0,02		
GTIN	6438377101367		
Surface finish	Electroplated with zinc after manufacturing in accordance with standard EN ISO 2081		

