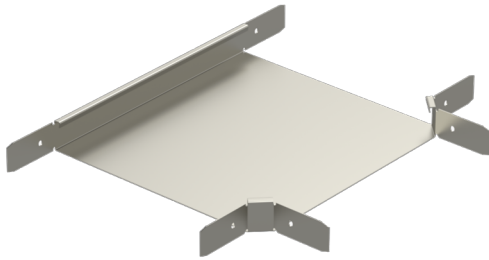


# T-piece

## RT-40-100 PG

T-pieces RT are used to make T-junctions for cable trays KRA and KRB.



Product name	RT-40-100 PG		
SKU	1431351		
Material	Steel		
Corrosivity category	C1-C2		
Color	Grey		
Sales unit	PCE		
Packing size	2 PCE		
Dimensions (mm) Width   Height   Length	178	40	298
Weight (kg/pce)	0,32		
GTIN	6438377010034		
Surface finish	Manufactured of hot-dip galvanized steel in accordance with standard EN 10346		

Dimension A (mm)	98
Dimension B (mm)	138
Dimension H (mm)	40

