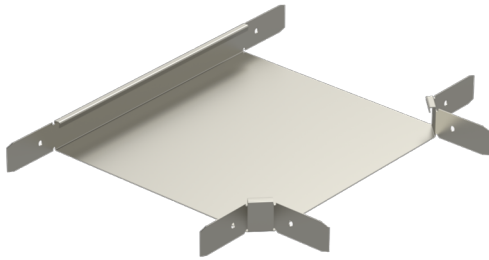


T-piece

RT-40-500 PG

T-pieces RT are used to make T-junctions for cable trays KRA and KRB.



| | | | |
|--|---|----|-----|
| Product name | RT-40-500 PG | | |
| SKU | 1431355 | | |
| Material | Steel | | |
| Corrosivity category | C1-C2 | | |
| Color | Grey | | |
| Sales unit | PCE | | |
| Packing size | 2 PCE | | |
| Dimensions (mm) Width Height Length | 598 | 40 | 698 |
| Weight (kg/pce) | 3,18 | | |
| GTIN | 6438377010072 | | |
| Surface finish | Manufactured of hot-dip galvanized steel in accordance with standard EN 10346 | | |

| | |
|------------------|-----|
| Dimension A (mm) | 498 |
| Dimension B (mm) | 538 |
| Dimension H (mm) | 40 |

