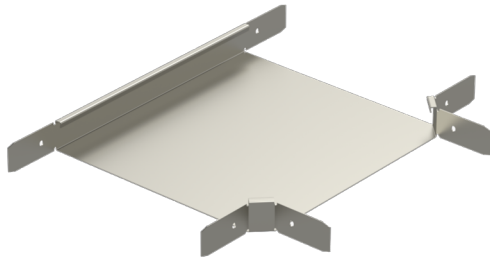


T-piece

RT-60-100 PG

T-pieces RT are used to make T-junctions for cable trays KRA and KRB.



Product name	RT-60-100 PG		
SKU	1432281		
Material	Steel		
Corrosivity category	C1-C2		
Color	Grey		
Sales unit	PCE		
Packing size	2 PCE		
Dimensions (mm) Width Height Length	178	60	298
Weight (kg/pce)	0,43		
GTIN	6438377014278		
Surface finish	Manufactured of hot-dip galvanized steel in accordance with standard EN 10346		

Dimension A (mm)	98
Dimension B (mm)	138
Dimension H (mm)	60

