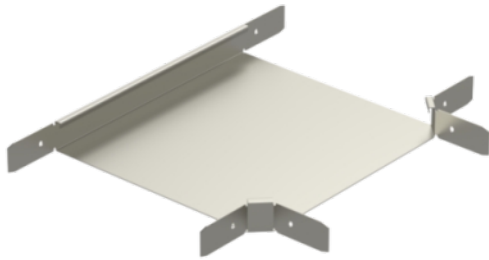


## T-piece RT-60-400 XPG

T-pieces RT are used to make T-junctions for KR-type cable trays. Jointing of RT to cable trays is fast and easy, because T-pieces have joint slats already at place. Product set includes bolts and nuts for fastening.



Product name	RT-60-400 XPG		
SKU	1478009		
Material	Steel		
Corrosivity category	C1-C4		
Color	Grey		
Sales unit	PCE		
Packing size	2 PCE		
Dimensions (mm) Width   Height   Length	500	60	600
Weight (kg/pce)	2,35		
GTIN	6438377128852		
Surface finish	Manufactured of coated steel in accordance with standard EN 10346		