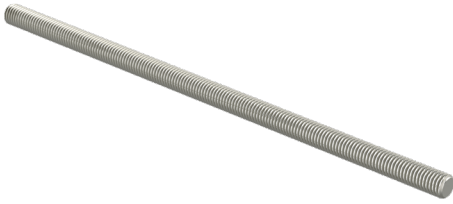


Threaded rod GT-16 L=2000 EG

Threaded rods GT are used for suspending cable ladders and trays with different types of intermediate supports and ceiling brackets.



Product name	GT-16 L=2000 EG		
SKU	1449651		
Material	Steel		
Corrosivity category	C1-C2		
Color	Grey		
Sales unit	MTR		
Packing size	10 PCE / 20 MTR		
Dimensions (mm) Width Height Length	16	16	2000
Weight (kg/pce)	2,5		
GTIN	6438377022570		
Surface finish	Electroplated with zinc after manufacturing in accordance with standard EN ISO 4042		

Dimension L (mm)	2000
Loading capacity (kg)	1000